



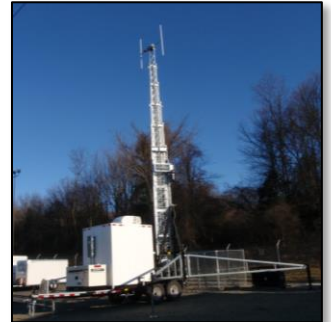
CACHE INVENTORY GUIDE

Communications Equipment

Towable Communications Tower - UHF, VHF, 800 MHz

- Used for special events or organizations experiencing loss of communications infrastructure.
- Contains UHF, VHF, and 800 MHz quantar base stations, and UHF GTR base stations (Lexington tower does not have VHF or 800 MHz quantars).
- 100' extendable antenna.

Location	Quantity
Beverly Cache	1
Framingham Cache	1
Lexington Cache	1



Portable Radios – Motorola XTS 2500 UHF

- Full display with keypad.
- Pre-programmed to CMED, BAPERN, and UTAC.
- 8 hour battery life.
- Speaker mike available with each radio.

Location	Quantity
Beverly Cache	30
Framingham Cache	30
Lexington Cache	30



Portable Emergency Operations Center (PEOC)

- NERAC has one Portable Emergency Operations Center. It is located at the Beverly Cache Site, and can be used to set-up and operate a standalone EOC. All equipment below is included, and can be borrowed altogether as the PEOC, or on a piece by piece basis.
- Deployed in two trailers with one towable generator.

Gatekeeper GK1-1935 Emergency Shelter Facility (Quantity - 1)

- 19' x 35' octagonal shelter.
- Rigid aluminum frame, with vinyl cover.
- Full HVAC system with insulated roof.
- 45-60 minute set-up time.



ICRI – Incident Commander Radio Interface (Quantity - 1)

- Used to connect two or more radios that operate on different frequencies.
- 5 radio I/O ports, 1 handset I/O port, and 1 telephone I/O port.
- Contains interface cables for Motorola XTS1500, XTS2500, XTS3000, XTS3500, XTS5000, and XTL5000.
- Runs on AC or DC current.



Beverly Cache Site

43 Airport Road
Beverly, MA 01915
978-922-5680

Framingham Cache Site

100 Western Avenue
Framingham, MA 01702
508-532-6044

Lexington Cache Site

60 Hartwell Avenue
Lexington, MA 02421
781-862-1618





CACHE INVENTORY GUIDE

Communications Equipment

(PEOC Cont.)

Motorola XTL5000 Consolette (Quantity - UHF -1, VHF - 1, 800 MHz -1)

- Used to create/transmit a frequency in the field.
- One UHF, one VHF, one 800 MHz.



NOMAD Portable Office (Quantity - 1)

- Contains a laptop, portable printer, 3G/4G router, wifi, satellite uplink, VoIP phone calls, and video conferencing.
- Runs on AC or DC current.

Portable Radios – Motorola XTS 1500 (Quantity - UHF -12, VHF - 3, 800 MHz -3)

- Full display.
- 8 hour battery life.



Portable UHF Repeater (Quantity - 1)

- Motorola model PDR3500.
- Can be quickly deployed to provide wide area radio coverage to an area for first responders.



Satellite Phone – Iridium Model 9505A (Quantity - 8)

- Provides mobile voice communications in any location or situation.
- High capacity battery with AC and DC chargers.
- 30 hours of standby time, 3.2 hours of talk time at full charge.

Microwave Point-to-Point (Quantity - 1)

- Used to quickly extend LAN/WAN/VoIP to an area that does not have coverage.

Laptops – Dell Latitude ATG D630 (Quantity - 8)

- Core 2 Duo, 800 MHz.
- 14.1 inch wide screen.
- 80GB hard drive 9.5MM, 7200 RPM.
- Windows XP Professional.
- Ruggedized and water resistant.



MMD Equipment Towable Generator – Airman PowerPro 25 (Quantity - 1)

- 25 KVA.
- 31.5 HP Isuzu 4LE1 engine.
- 2950 lbs. towing weight (with fuel).
- 67"L x 28"W x 50"H.
- 50 gallon fuel capacity for 29 hours of continuous operation.



A digital camera, portable GPS, and binoculars are also included in the PEOC.



Beverly Cache Site

43 Airport Road
Beverly, MA 01915
978-922-5680

Framingham Cache Site

100 Western Avenue
Framingham, MA 01702
508-532-6044

Lexington Cache Site

60 Hartwell Avenue
Lexington, MA 02421
781-862-1618





CACHE INVENTORY GUIDE

Communications Equipment

Rohn 45G Tower

- 110' Tower with ten (10) 10' steel body sections, one (1) 10' steel top section, guy wires, and baseplate.

Location	Quantity
Beverly Cache	1

LMR400 Coaxial Cable

- One (1) 500' cable, two (2) 100' cables, and two (2) 50' cables.
- All cable is 3/8" diameter.

Location	Quantity
Beverly Cache	See above



UHF Antenna

- Fiberglass structure
- 450-520 MHz
- 2.5 dB
- 42" Height

Location	Quantity
Beverly Cache	3



VHF Antenna

- Fiberglass structure
- 144-162 MHz
- 44-56" Height

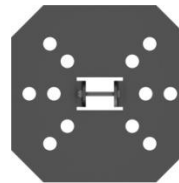
Location	Quantity
Beverly Cache	3



Blue Sky Mast

- 45' Antenna mast with side arm kit, telescoping tripod struts baseplate kit, and urban baseplate kit.
- Please see training video [here](#).

Location	Quantity
Beverly Cache	1



Beverly Cache Site
43 Airport Road
Beverly, MA 01915
978-922-5680

Framingham Cache Site
100 Western Avenue
Framingham, MA 01702
508-532-6044

Lexington Cache Site
60 Hartwell Avenue
Lexington, MA 02421
781-862-1618

